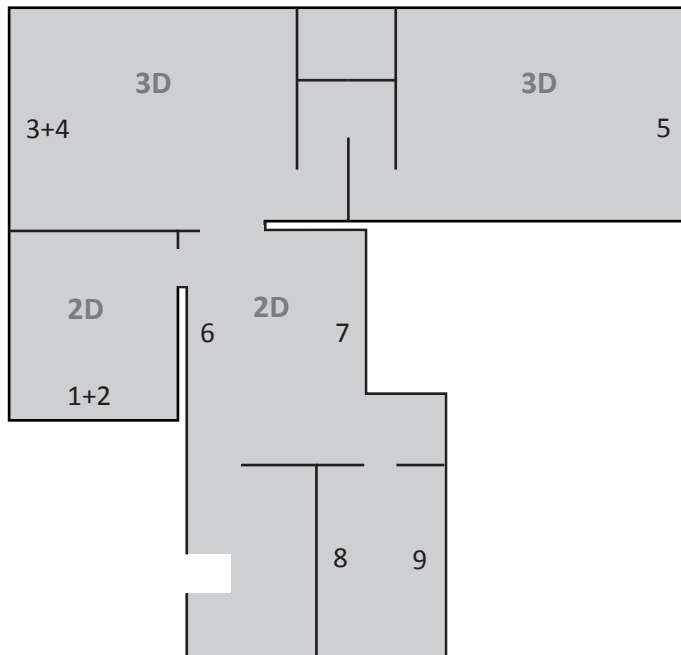


ULF LANGHEINRICH | IMMERSION - Selected Works 2005-2015



- 1 I MISS YOU, 2015, 10'
Installation: 2D Projection, Stroboscope, Quadrophonic sound, Sub-bass
- 2 NO LAND IV, 2005-2015, 10'
Installation: 2D Projection, Quadrophonic sound, Sub-bass
- 3 NO LAND I, 2008/2015, 15'
Installation: Dual HD/3D Projection, Quadrophonic sound, Sub-bass
- 4 NO LAND III, 2005/2015, 15'
Installation: Dual HD/3D Projection, Quadrophonic sound, Sub-bass
- 5 LAND, 2008-2015, generativ
Installation: Dual HD/3D Projection, Stroboscope, Quadrophonic sound, Sub-bass
- 6 WAVEFORM A, 2005/2015, 15'
4K on 4HD Panels, Stereophonic sound
- 7 MOVEMENT Y, 2010-2014, 15'
4K on 4HD Panels, Stereophonic sound
Performance by Toshiko Oiwa
- 8 FOUR BLUE FIELDS, 1991
Acrylic on canvas
- 9 FOUR BODIES DISAPPEARING, 1990
Acrylic on canvas

Ulf Langheinrich:

Recordings, image processing and compositing, light and image editing and/or real-time composition, sound design and original music. Painting.

Matthias Härtig:

Modular audiovisual real-time software development and computer setup.

Carla Ho Choi Chan:

Compositing and artistic assistance.

Epidemic|
Richard Castelli assisted by
Chara Skiadelli, Florence Berthaud
and Claire Dugot:

Production, management and space design.